

Smart Thermal



Perimeter Protection



Fire Prevention



Temperature Measuring



SunView Management Platform



Live View

Real time preview of thermal imaging image, statistics of the thermal imaging alarm, display of thermal imaging temperature curve



Thermal Image Search

Retrieve historical snapshot data from thermal imaging cameras



Thermal Image History

Retrieve historical data of thermal imaging camera area temperature measurement



Inspection Plan

Configure thermal imaging inspection plan, retrieve inspection records, generate inspection report, etc.

Device List

Find and switch device

Live Video

Choose live video or Temp. value

Alarm Record

Show information of thermal imaging snapshots



PTZ Control Panel & Sensor Setting

Layout Switch

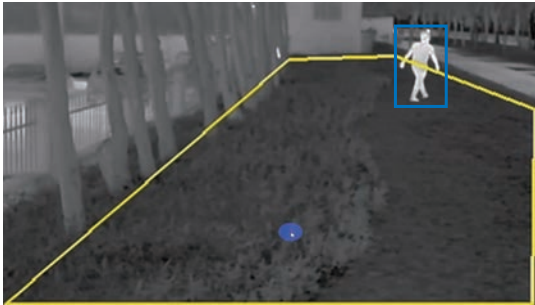
Max. 64 channels

Temperature Curve

Different areas can be selected

Application Scenarios

Smart Perimeter



Deep Learning



Human Detection



Vehicle Detection



Ship Detection

Smart Events



Intrusion



Single Line Crossing



Double Line Crossing



Loitering



Enter Area



Leave Area



Wrong-way

Fire prevention



Fire / Temp Anomalies Detection



Smoke & Flame Detection



Fire spot Detection



Smoking Detection



Temp Anomalies Detection



Surveillance Multi-strategy Combo

The combined usage of intelligent analysis and temperature measurements can activate timely alarms before or in the early stage of a fire hazard.



Real-time Sound and Light Alarm

There are built-in alarm lights and speakers for models whose name ends with CT or DT to activate the sound and light alarm when anomalies are found; Voice customizable.



Indoor/Outdoor Fire Prevention

Varied models can be selected to meet the indoor and outdoor detection needs for fire spots in short, medium, or long distances and abnormally high temperatures of targets.

Industrial Temperature Measurement



Temperature Detection



20 points/lines/areas



Preset Measurement



Temperature Threshold Alarm
Temperature Difference Alarm
Temperature Rise Alarm



Temperature Accuracy

$\pm 2^{\circ}\text{C}$ ($\pm 3.6^{\circ}\text{F}$) / $\pm 2\%$



Temperature Range Customizable

Default: -20°C ~ 150°C (-4°F ~ 302°F)

Customizable: $\leq 900^{\circ}\text{C}$ (1652°F)



Worm Gear and Worm Drive PTZ

Thermal PTZ cameras can always locate the position accurately. It will not be affected by the external power.



Preset Temperature Monitoring

Thermal PTZ series can monitor the temperature of preset points, which meets the requirement of multi-object temperature measuring in a big scenario.

Products

Bi-Spectrum Cube		Bi-Spectrum Turret	
	<p>SN-D2L</p> <ul style="list-style-type: none"> Thermal: 256×192, 12μm, 2.0 mm, H: 90°, V: 65° Optical: 2MP, 1600×1200, 2.3 mm White light Bi-spectrum image fusion Temperature range: -20°C to 150°C (-4°F to 302°F) Temperature accuracy: Max (± 2 °C, ±2 %) 10~30 VDC/PoE (802.3af) 		<p>SN-TPC2553CT</p> <ul style="list-style-type: none"> Thermal: 256×192, 12μm, 3.5/7 mm Optical: 4MP, 2560×1440, 4/8 mm Human/Vehicle/Smoke & Flame/Fire spot/Smoking Sound and light alarm Built in MIC and speaker 24 VAC/12 VDC/PoE(802.3af)
Bi-Spectrum Bullet		Bi-Spectrum Bullet	
	<p>SN-TPC2553DRT</p> <ul style="list-style-type: none"> Thermal: 256×192, 12μm, 3.5/7/10 mm Optical: 5MP, 2880×1620, 4/8 mm Human/Vehicle/Smoke & Flame/Fire spot/Smoking Sound and light alarm Built in speaker 24 VAC/12 VDC/PoE(802.3af) 		<p>SN-TPC4233DJT</p> <ul style="list-style-type: none"> Thermal: 400×300, 17μm, 8/15/25/35/50 mm Optical: 2MP, 1920×1080, 5 to 50 mm Human/Vehicle/Smoke & Flame/Fire spot/Smoking 100m IR 12 VDC/PoE+ (802.3at)
Bi-Spectrum Bullet		Bullet	
	<p>SN-TPC6457DLT</p> <ul style="list-style-type: none"> Thermal: 640×512, 12μm, 9/15/25/35/50 mm Optical: 4MP, 1/1.8", 2688×1520, 4/6/10 to 30 mm Human/Vehicle/Smoke & Flame/Fire spot/Smoking Built in MIC and high-power speaker Sound and light alarm 100m IR 24 VAC/12 VDC/PoE+(802.3at) 		<p>SN-TPC4203KT</p> <ul style="list-style-type: none"> Thermal: 400×300, 17μm, 8/15/25/35/50 mm Human/Vehicle/Fire spot Spot, line, area temperature measurement, 20 rules in total Temperature range: -20°C to 150°C (-4°F to 302°F) Temperature accuracy: Max (± 2 °C, ±2 %) 12 VDC/PoE (802.3af)
Bullet		Bi-spectrum PTZ	
	<p>SN-TPC6406KT</p> <ul style="list-style-type: none"> Thermal: 640×512, 12μm, 9/15/25/35/50 mm Human/Vehicle/Fire spot Spot, line, area temperature measurement, 20 rules in total Temperature range: -20°C to 150°C (-4°F to 302°F) Temperature accuracy: Max (± 2 °C, ±2 %) 24 VAC/12 VDC/PoE(802.3af) 		<p>SN-TPS6457EV(T) SN-TPS4157EV(T)</p> <ul style="list-style-type: none"> Thermal: 640 x 512, 25 mm Thermal: 384 x 288, 5/7/15/25 mm Optical: 4MP, 2688×1520, 1/1.8", 40 X Human/Vehicle/Smoke & Flame/Fire spot/Smoking 300m IR Smart Wiper Pan: 360°, Tilt: -10° to 90° 24 VAC/36 VDC/PoE++(802.3bt)

Mini Bi-spectrum PT



SN-TPT6436QF
SN-TPT4233QF

- Thermal: 640×512/400×300, 8/9/15/25/35/50 mm
- Optical: 4MP, 2592×1520, 30x, 5.3 to 159 mm
- Human/Vehicle/Smoke & Flame/Fire spot/Smoking
- White Light: 30 m
- Temperature accuracy: Max (± 2 °C, ±2 %)
- Worm gear and worm drive, Power off self-locking
- Pan: 360°, Tilt: +90° to -90°
- 24 VDC

Bi-spectrum PT



SN-TPT6436LZ
SN-TPT4233LZ

- Thermal: 640×512/400×300, 8/9/15/25/35/50 mm
- Optical: 4MP, 2592×1520, 30x, 5.3 to 159 mm
- Human/Vehicle/Smoke & Flame/Fire spot
- Temperature accuracy: Max (± 2 °C, ±2 %)
- Worm gear and worm drive, Power off self-locking
- Pan: 360°, Tilt: +90° to -90°
- 36 VDC

Laser Bi-spectrum PT



SN-TPT6436LPZ
SN-TPT4233LPZ

- Thermal: 640×512/400×300, 75/100/26 to 105mm
- Optical: 5MP, 2560×1920, 40x, 5 to 200 mm
4MP, 2592×1520, 37x, 6.8 to 251 mm
- Human/Vehicle/Smoke & Flame/Fire spot/ship
- 800m IR
- Worm gear and worm drive, Power off self-locking
- Pan: 360° Tilt: +90° to -90°
- Anti-corrosion, optional coating
- 36 VDC

Bi-spectrum PT



SN-TPT6436ZZ
SN-TPT4233ZZ

- Thermal: 640×512/400×300, 50/75/100mm
- Optical: 5MP, 2560×1920, 40x, 5 to 200 mm
4MP, 2592×1520, 37x, 6.8 to 251 mm
- Human/Vehicle/Smoke & Flame/Fire spot/ship
- Worm gear and worm drive; Power off self-locking
- Pan: 360° Tilt: +40° to -75°
- 36 VDC

Heavy Duty PT



SN-TPT6436HZ
SN-TPT4233HZ

- Thermal: 640×512/400×300, 75/100/30 to 150 mm
- Optical: 4MP, 2592×1520, 32x, 12.5~400 mm
4MP, 2592×1520, 32x, 15.6~500 mm
4MP, 2592×1520, 60x, 12.5~750 mm
4MP, 2592×1520, 60x, 16.7~1000 mm
4MP, 2560×1440, 86X, 10 ~ 860 mm
- Human/Vehicle/Smoke & Flame/Fire spot/ship
- Worm gear and worm drive; Power off self-locking
- Pan: 360° Tilt: +40° to -45°
- 36 VDC

Heavy Duty PT



SN-TPT6436MZ
SN-TPT4233MZ

- Thermal: 640×512/400×300, 30 to 150 mm
- Optical: 4MP, 2560×1440, 86X, 10~860 mm
- Human/Vehicle/Smoke & Flame/Fire spot/ship
- Optical defog
- Worm gear and worm drive; Power off self-locking
- Pan: 360° Tilt: +40° to -45°
- 48 VDC

Explosion-proof Bullet

SN-TPH6406DA SN-TPH4203DA



- 316L Stainless Steel
- Ex d II C T6 Gb / Ex tD A21 IP68 T80°C
- Thermal: 640×512/400×300, 8/9/15/25/35/50 mm
- Human/Vehicle/Fire Spot
- Temperature Pre-alarm&Alarm
- Temperature range: -20°C to 150°C (-4°F to 302°F)
- Temperature accuracy: Max (± 2 °C, ±2 %)
- Customizable
- 100 to 240 VAC

Explosion-proof PT

SN-TPT6436PA SN-TPT4233PA



- 316L Stainless Steel
- Ex d II C T6 Gb / Ex tD A21 IP68 T80°C
- Thermal: 640×512/400×300, 8/9/15/25/35/50 mm
- Optical: 4MP, 2592×1520, 30X, 5.3 mm to 159 mm
- Human/Vehicle/Smoke & Flame/Fire Spot
- Pan: 360° Tilt: +90° to -90°
- IR: 200 m
- Temperature Pre-alarm&Alarm
- 100 to 240 VAC

Mini Module

SN-TPC6406VT



- Thermal: 640×512, 12 μm, 8 μm to 14 μm
- Free focus lens: 8/15/25/35/50 mm
- Motorized Focus Lens: 25/50/75/100 mm
- Motorized Zoom Lens: 26 to 105/30 to 150 mm
- Detection: Human/Vehicle/Fire spot/Ship
- Temperature measurement range: -20°C to 150°C (-4°F to 302°F), 0°C to 550°C (34°F to 1022°F)
- Temperature accuracy: Max (± 2 °C, ±2 %)
- Auto Anti-burning
- 64.8 × 52 × 52 mm (2.55 × 2.05 × 2.05 inch), without lens
- 12 VDC

Module

SN-TPC4203AT



- Thermal: 400×300, 17 μm, 8 μm to 14 μm
- Manual focus lens: 8/15/25/35/50 mm
- Motorized Focus Lens: 25/50/75/100 mm
- Motorized Zoom Lens: 26 to 105/30 to 150 mm
- Detection: Human/Vehicle/Fire spot/Ship
- Temperature measurement range: -20°C to 150°C (-4°F to 302°F), 0°C to 900°C (34°F to 1652°F)
- Temperature accuracy: Max (± 2 °C, ±2 %)
- Auto Anti-burning
- 90.5 × 70 × 70 mm (3.56 × 2.76 × 2.76 inch), without lens
- 12 VDC



Shenzhen Sunell Technology Corporation

22-23F, Building 2, Chongwen Park, Nanshan Zhiyuan (Phase 3), No. 3370 Liuxian Avenue, Nanshan District, Shenzhen 518052

+86(755) 2675 4336 +86(755) 8602 6152 sales@sunellsecurity.com

©2024 Shenzhen Sunell Technology Corporation. All rights reserved.

The specifications and descriptions of products and services contained in this catalogue were correct at the time of publishing. Inner Range reserves the right to change specifications or withdraw products without notice.