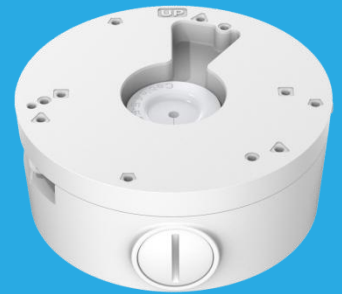




SN-CBK654

Junction Box



Specification

Parameter	
Applicable Model:	Please see "Accessory Selection"
Material	Aluminum alloy
Color	White
Operating Humidity	0% - 90% RH
Load Bearing	3 kg (6.61 lb)
Product Dimensions	$\phi 123 \times 52\text{mm}$ ($\phi 4.84 \times 2.05''$)
Product Weight	0.4kg (0.88 lb)

Dimensions (mm)

