



# SN-CHP8641EBR(-K)-Z40-SS

4MP 40x Starlight IR Explosion-proof Network Camera



## Key Features

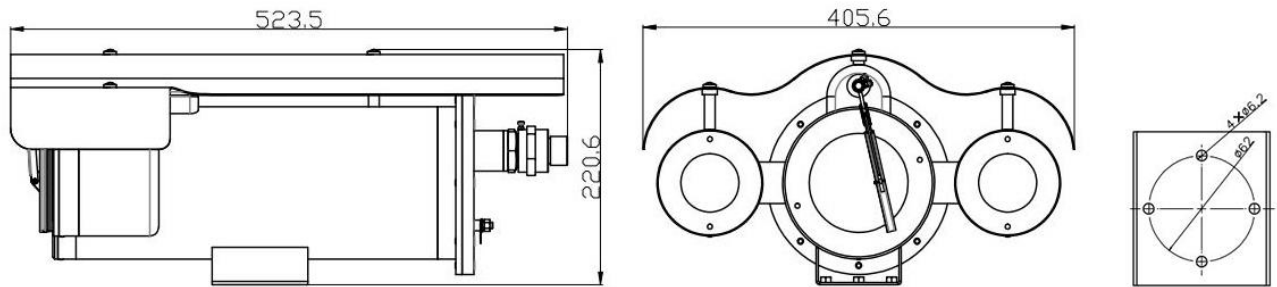
- 1/1.8" 4MP STARVIS™ CMOS
- 40x optical zoom and 16x digital zoom
- Support face, human and vehicle detection and capture
- Support smoke and fire detection as well as smart motion detection
- Intelligent analysis: intrusion, single line crossing, double line crossing, loitering, wrong-way, illegal parking and people counting
- True WDR, 3D DNR, ICR, Defog and DIS
- Smart IR distance up to 200m
- -K: Support fiber optical interface
- Material: 316L Stainless steel, IP68 water resistant
- ATEX: II 2 G Ex db op is IIC T6 Gb, Ex II 2 D Ex tb op is IIIC T80°C Db

# Specification

Camera				
Image Sensor	1/1.8" Progressive Scan CMOS			
Max. Resolution	2592(H) × 1520(V)			
Min. illumination	Color: 0.001 Lux @ (F1.5, AGC ON), B/W: 0.0001 Lux @ (F1.5, AGC ON), 0 Lux with IR			
Electronic Shutter	Auto/Manual, 1/5 to 1/20,000s			
Day & Night	Auto (ICR)			
Wiper	Support			
Lens				
Focal Length	5.3 to 212 mm, 40x optical zoom			
Aperture	F1.5 to F4.8			
Angle of View	H: 60.7° to 2.33°, V: 36.8° to 1.38°			
Zoom Speed	Approx. 2.5s			
Iris Control	Auto/Manual			
Focus Control	Auto/Manual/Semi-automatic			
Digital Zoom	16x			
DORI Distance				
Lens	Detect	Observe	Recognize	Identify
Wide	100m (328.1ft)	40m (131.2ft)	20m (65.6ft)	10m (32.8ft)
Tele	4,000m (13,123.4ft)	1,600m (5,249.3ft)	800m (2,624.6ft)	400m (1,312.3ft)
Illuminator				
Illuminator Type	IR			
Illumination Distance	Up to 200 m (656.2 ft)			
Illumination On/Off Control	Auto/Manual			
Video and Audio				
Streaming Capability	3 Streams			
Stream/Frame Rate	Stream1: 2592×1520, 2304×1296, 1920×1080, 1280×720 @25/30fps Stream2: D1, VGA, CIF @25/30fps Stream3: VGA, CIF, QVGA @25/30fps			
Bit Rate Control	CBR/VBR			
Bit Rate	Stream1: 200kbps to 16Mbps Stream2: 100kbps to 6Mbps Stream3: 100kbps to 3Mbps			
Smart Encoder	Support			
Region of Interest (ROI)	Support			
Audio Compression	G.711: 64Kbps, RAW_PCM: 128Kbps			
Image				
Image Adjustment	Brightness, Sharpness, Contrast, Saturation			
Mirror	Support			
Exposure Mode	Auto/Manual			

White Balance	Auto/Manual
Day/Night Setting	Auto, Day, Night, Time
Noise Reduction	2D/3D DNR
Image Enhancement	HLC, BLC, Defog, Anti-shake
Wide Dynamic Range	True WDR
S/N Ratio	55dB
Privacy Masking	Support 8 zones, mask color configurable
<b>Smart Function</b>	
Basic Event	Motion detection alarm, I/O alarm, Disk alarm, Network alarm
Multi-Object Detection	Support face, human, vehicle detection and capture
Intelligent Analysis	Intrusion, Single line crossing, Double line crossing, Loitering, Wrong-way, Illegal parking, Smart motion detection (support the accurate detection of vehicle and human)
Smoke & Fire Detection	Support
People Counting	Support
<b>Network</b>	
Protocols	IPv4, IPv6, TCP/IP, HTTP, HTTPS, RTSP/RTP/RTCP, IGMP/Multicast, SMTP, DHCP, NTP, DNS, DDNS, QoS, SNMP, 802.1X, UDP, ICMP, ARP, TLS
Interoperability	ONVIF, SDK
Streaming Method	Multicast
Max. User Access	10 Users
Web Viewer	<IE11, Chrome, Firefox, Microsoft Edge
Language	English, Chinese, Polish, Italian, Portuguese, Spanish, Russian, French, Czech, Hungarian. Default: English
<b>Interface</b>	
Network Interface	1 Ethernet (10/100 Base-T) RJ-45 Connector
Fiber Optical	-K: 1 single module fiber interface
Audio Interface	1ch Input, 1ch Output
Alarm Interface	2ch Input, 1ch Output
RS-485	Support
CVBS Interface	Support
SD Card Slot	Built-in, up to 256GB
Reset Button	Built-in
<b>Electrical</b>	
Power Supply	100 to 240VAC
Power Consumption	Less than 36 W
Operating Temperature	-40°C to 60°C (-40°F to 140 °F)
Operating Humidity	Less than 90% RH
Ingress Protection	IP68
Certifications	ATEX: Ex II 2G Ex db op is IIC T6 Gb /Ex 2D tb op is IIIC T80°C Db, IECEX: Ex db op is IIC T6 Gb /Ex tb op is IIIC T80°C Db
Casing	SUS316L
Dimensions	523.5 × 405.6 × 220.6 mm (20.6 × 16 × 8.7 inch)
Net Weight	18.5 kg (40.79 lb)

## Dimensions (mm)



## Accessories

### Optional:



SN-BK401A-SS  
Wall Mount



SN-BK406  
Pole Mount



SN-BK407-SS  
Corner Mount



SN-BK400-SS(P/F/D)  
Junction Box



SN-CPL10A-SS  
Washing Tank



Flexible Tube