

## Bullet Network Camera Quick Setup Guide

NO:101-300-0782-01  
Issue:1.0

### Precautions

Fully understand this document before using this device, and strictly observe rules in this document when using this device. If you install this device in public places, provide the tip "You have entered the area of electronic surveillance" in an eye-catching place. Failure to correctly use electrical products may cause fire and severe injuries.

|                |                                                                                                                                                |
|----------------|------------------------------------------------------------------------------------------------------------------------------------------------|
| <b>WARNING</b> | It alerts you to moderate dangers which, if not avoided, may cause minor or moderate injuries.                                                 |
| <b>CAUTION</b> | It alerts you to risks. Neglect of these risks may cause device damage, data loss, device performance deterioration, or unpredictable results. |
| <b>NOTE</b>    | It provides additional information.                                                                                                            |

### **WARNING**

- Strictly observe installation requirements when installing the device. The manufacturer shall not be held responsible for device damage caused by users' non-conformance to these requirements.
- Strictly conform to local electrical safety standards and use power adapters that are marked with the LPS standard when installing and using this device. Otherwise, this device may be damaged.
- Use accessories delivered with this device. The voltage must meet input voltage requirements for this device.
- If this device is installed in places with unsteady voltage, ground this device to discharge high energy such as electrical surges in order to prevent the power supply from burning out.
- When this device is in use, ensure that no water or any liquid flows into the device. If water or liquid unexpectedly flows into the device, immediately power off the device and disconnect all cables (such as power cables and network cables) from this device.
- Do not focus strong light (such as lighted bulbs or sunlight) on

this device. Otherwise, the service life of the image sensor may be shortened.

- If this device is installed in places where thunder and lightning frequently occur, ground the device nearby to discharge high energy such as thunder strikes in order to prevent device damage.

### **CAUTION**

- Avoid heavy loads, intensive shakes, and soaking to prevent damages during transportation and storage. The warranty does not cover any device damage that is caused during secondary packaging and transportation after the original packaging is taken apart.
- Protect this device from fall-down and intensive strikes, keep the device away from magnetic field interference, and do not install the device in places with shaking surfaces or under shocks.
- Clean the device with a soft dry cloth. For stubborn dirt, dip the cloth into slight neutral cleanser, gently wipe the dirt with the cloth, and then dry the device.
- Do not jam the ventilation opening. Follow the installation instructions provided in this document when installing the device.
- Keep the device away from heat sources such as radiators, electric heaters, or other heat equipment.
- Keep the device away from moist, dusty, extremely hot or cold places, or places with strong electric radiation.
- If the device is installed outdoors, take insect- and moisture-proof measures to avoid circuit board corrosion that can affect monitoring.
- Remove the power plug if the device is idle for a long time.
- Before unpacking, check whether the fragile sticker is damaged. If the fragile sticker is damaged, contact customer services or sales personnel. The manufacturer shall not be held responsible for any artificial damage of the fragile sticker.
- Keep the device ventilation to avoid overheating.
- Do not install the device in extremely hot, cold, dusty, high salinity, high humidity, or corrosive environments; Forbid disassembling the device in these environments.
- If the equipment is disassembled for a long time, or the device is not installed properly after debugging, it will affect the sealing, cause the equipment to fog up and not work properly.

### Special Announcement

- All complete products sold by the manufacturer are delivered along with nameplates, quick setup guide and accessories after strict inspection. The manufacturer shall not be held responsible for counterfeit products.
- The manufacturer will update this manual according to product function enhancement or changes and regularly update the software and hardware described in this manual. Update information will be added to new versions of this manual without prior notice.
- This manual may contain misprints, technology information that is not accurate enough, or product function and operation description that is slightly inconsistent with the actual product, the final interpretation of company is as a standard.
- This manual is only for reference and does not ensure that the information is totally consistent with the actual product. For consistency, see the actual product.

### **NOTE**

For more information, please refer to website.

## 1 Open Package Examination

Open the package, check the appearance of product for no obvious damage, and confirm the item list for table 1-1 is consistent.

Table 1-1 Packing list

| Component                               | Quantity | Remark |
|-----------------------------------------|----------|--------|
| Bullet Network Camera                   | 1        |        |
| Quick Setup Guide                       | 1        |        |
| Installation location sticker           | 1        |        |
| Hex Wrench                              | 2        |        |
| Plastic anchor                          | 4        |        |
| Stainless self-tapping screw PA4.0×35mm | 4        |        |
| Stainless hexagon screw                 | 4        |        |
| Base                                    | 1        |        |
| Network access port protective cover    | 1        |        |
| Waterproof rubber seal                  | 1        |        |
| Alarm in/out connector                  | 1        |        |

## 2 Device Structure

### 2.1 Device Ports

#### **NOTE**

Different devices may have different ports and multi-head cables; Please refer to the actual product.

Figure 2-1 Hardware ports

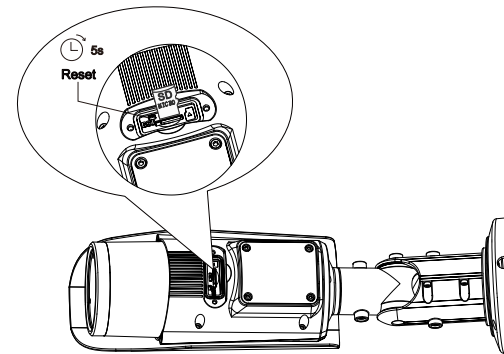


Table 2-1 Hardware ports description

| ID | Port Name    | Description                                                                                                                                                                                                                                                                                                        |
|----|--------------|--------------------------------------------------------------------------------------------------------------------------------------------------------------------------------------------------------------------------------------------------------------------------------------------------------------------|
| 1  | Reset button | Restore the camera to the factory settings by pressing and holding this button for more than five seconds.                                                                                                                                                                                                         |
| 2  | SD card slot | Install a SD card.<br><b>NOTE</b><br><ul style="list-style-type: none"> <li>Before install a SD card, verify the card not in write protection state.</li> <li>Before remove the SD card. Verify the card not in write protection state. Otherwise, the data may be lost, or the SD card may be damaged.</li> </ul> |

Figure 2-2 Multi-head cable

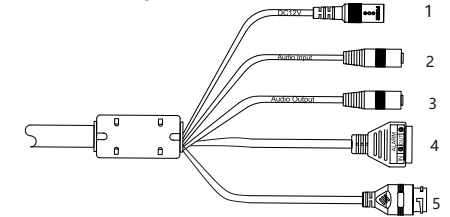


Table 2-2 Multi-head cable 2 description

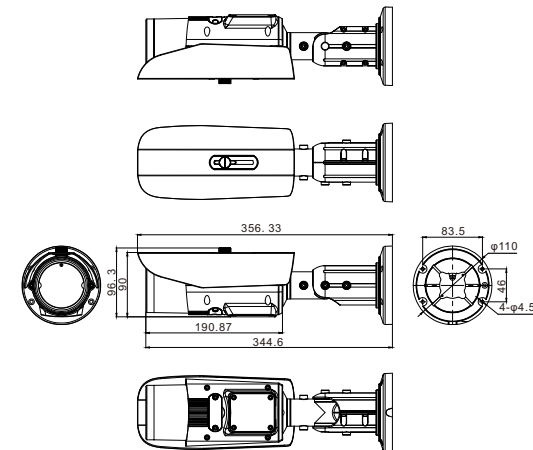
| ID | Core              | Description                                                                | Remark                                 |
|----|-------------------|----------------------------------------------------------------------------|----------------------------------------|
| 1  | Power supply      | Connect to a 12V(-15%~+10%) direct current (DC) power supply.              |                                        |
| 2  | Audio input port  | Receive an analog audio signal from devices such as a sound pickup device. | Applied for camera with audio function |
| 3  | Audio output port | Connect to an external audio device such as a speaker.                     |                                        |
| 4  | G                 | Alarm out com                                                              | Applied for alarm function             |
|    | OUT               | Alarm out                                                                  |                                        |
|    | G                 | Alarm in com                                                               |                                        |
| 5  | IN                | Alarm in                                                                   |                                        |
|    | Network interface | Connect to a standard Ethernet cable.                                      |                                        |

### 2.2 Camera Dimensions

#### **NOTE**

Different devices may have different dimensions; Please refer to the actual product.

Figure 2-3 Dimensions (Unit: mm)



## 3 Device Installation

The Bullet Network Camera can be installed on the ceiling or wall. If the camera is installed on a concrete wall, install the plastic anchors before installing the bracket. If the camera is installed on a wooden wall, use self-tapping screws to install the bracket directly.

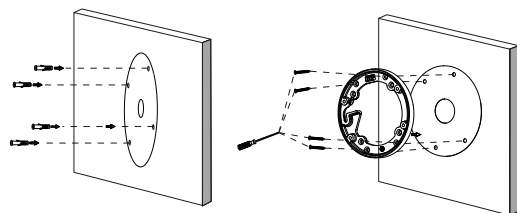
### NOTE

The wall where the bracket is installed must be able to bear at least three times of the total weight of the bracket and the camera.

### Installation Steps:

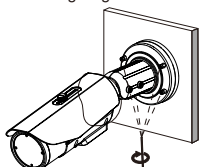
- Step 1 Stick the Installation location sticker on the ceiling or wall, drill three holes based on the marks on the sticker. Drive the plastic anchors into the holes.
- Step 2 Take out the base and the stainless self-tapping screws delivered with the camera. Use the stainless self-tapping screws to secure the base onto the ceiling or wall, and mount the camera on the slot of the base using screws at the bottom of the camera, as shown in figure 3-1.

Figure 3-1 Installing base



- Step 3 Adjust the position of the camera, expose the cable outlet, and connect the multi-head cable of the camera.
- Step 4 Adjust the position of the camera based on the arrows marked on the figure 3-2. Align the installation holes at the bottom of the camera with the screw holes on the base and fix the camera on the base, as shown in figure 3-2.

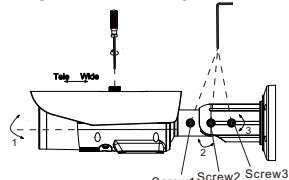
Figure 3-2 Aligning the screw holes



- Step 5 Use the hex Wrench to loosen screws 1 to 3, as shown in figure 3-3.

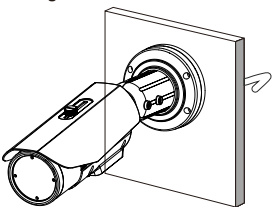
To rotate the arrow 1 of the camera for 360°, loosen screw 1. To rotate the arrow 2 of the camera for 90°, loosen screw 2. To rotate the arrow 3 of the camera for 360°, loosen screw 3.

Figure 3-3 Loosening screws



- Step 6 Adjust the zoom button and the focusing button until the view is clear. Tighten the all screws to finish installation.

Figure 3-4 Finish installation



## 4 Quick Configuration(e.g Edge)

### 4.1 Login

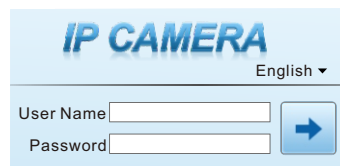
- Step 1 Open the **Microsoft Edge** browser (switch to IE mode), enter the IP address of IP camera (default value: 192.168.0.120) in the box, and press **Enter**. The login page is displayed as shown in figure 4-1.

- Step 2 Input the user name and password.

### NOTE

- Access the web at Microsoft Edge browser where the mode should switch to **Reload in Internet Explorer mode**. At browser "Setting > Default browser" page, let **Internet Explorer open sites in Microsoft Edge** choose "Always (Recommended)". **Allow sites to be reloaded in Internet Explorer mode (IE mode)** choose "Allow".
- The default user name is admin. The default password is admin.
- Change the password when you log in the system for first time to ensure system security.
- It is advised to restart the device three minutes later after modifying the password
- You can change the system's display language on the login page.

Figure 4-1 Login



- Step 3 Click **Login** icon, the main page is displayed.

### 4.2 Modify IP address

Choose **Configuration > Device > Local Network**, the **Local Network** page is displayed.

Input the IP address in the IP Address box and click **Apply** as shown in figure 4-2.

After the IP address is set successfully, please use the new IP address to login the Web interface.

Figure 4-2 Local Network



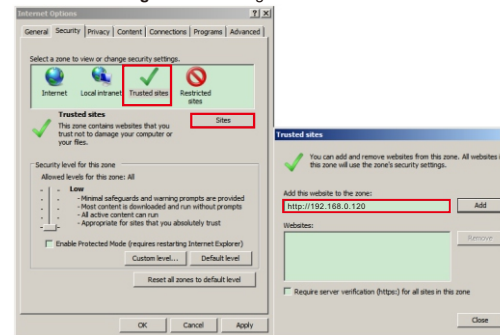
### 4.3 Browsing Video

To ensure the real-time video can be played properly, you must perform the following operation when you log in the web for the first time:

If user can access the web immediately, please ignore the steps of adding trusted sites.

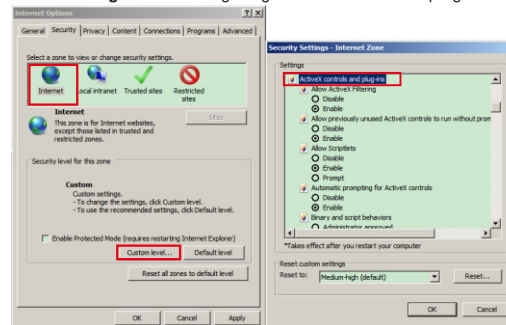
- Step 1 In Microsoft Edge . Choose **Control panel > Internet options > Security > Trusted sites > Sites**, in the display dialog box, click **Add**, as shown in figure 4-3.

Figure 4-3 Adding a trusted site



- Step 2 In Microsoft Edge , choose **Control panel > Internet Options > Security > Customer level**, and set **Download unsigned ActiveX control and initialize and script ActiveX controls not marked as safe for scripting under ActiveX controls and plug-ins to Enable**, as shown in figure 4-4.

Figure 4-4 Configuring ActiveX control and plug-in



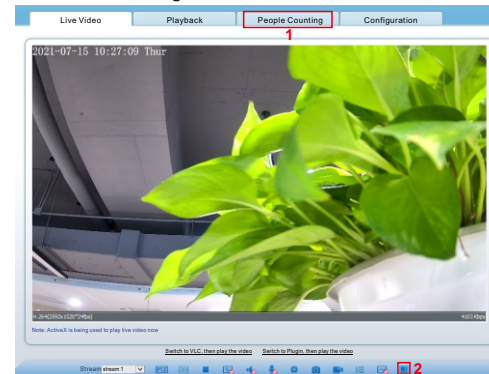
- Step 3 Download and install the player control as prompted.

### NOTE

If the repair tips displayed when installing the control, please ignore the prompt and continue the installation, the login page is displayed when the control is loaded.

To browse a real-time video, click Live Video. The Live Video page is displayed, as shown in figure 4-5.

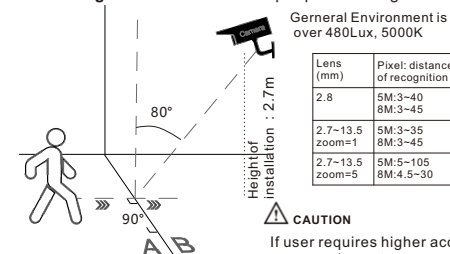
Figure 4-5 Live Video



1 **People Counting**: User can query the data of people counting, through year, month, day. The statistics can be downloaded. The data can be shown by line chart, histogram, list.

2 **AI Live video**: Click the icon to view the snapshots of human face or license plate (click "Face" or "Plate" to switch ). The bottom page will show the captured images of vehicle and human .

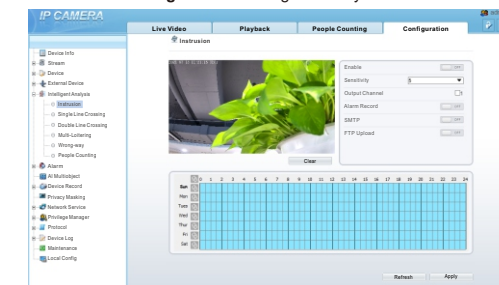
Figure 4-6 Installation of people counting



### 4.4 Intelligent Analysis

At "Configuration > Intelligent Analysis" interface, users can set the parameters of Intrusion, Single Line Crossing, Double Line Crossing, Multi-Loitering, Wrong-way and People Counting, as shown in figure 4-7 .

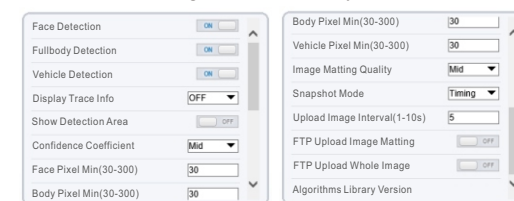
Figure 4-7 Intelligent Analysis



### 4.5 AI Multi object

At "Configuration > AI Multi object" interface, users can enable face detection, full body detection, vehicle detection, set the other parameters of detection, as shown in figure 4-8.

Figure 4-8 AI Multi-object



### NOTE

For better capture performance, it is recommended to use 6mm focus length lens or above.